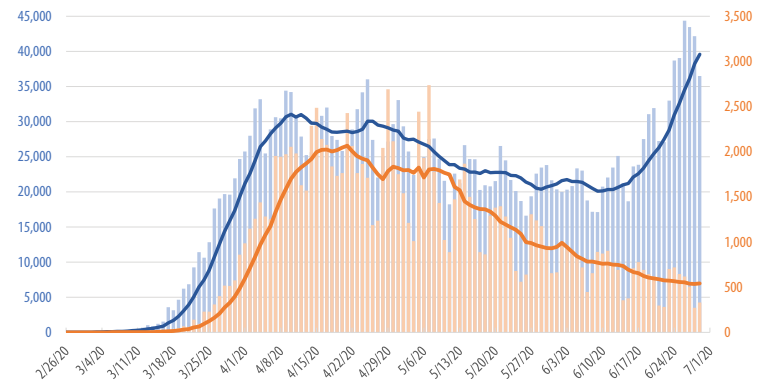


# First Trust COVID-19 TRACKER

## Daily New Positive Tests vs. Daily Deaths in the U.S.

February 26, 2020 - June 29, 2020



Source: Covidtracking.com

There were **273 deaths**

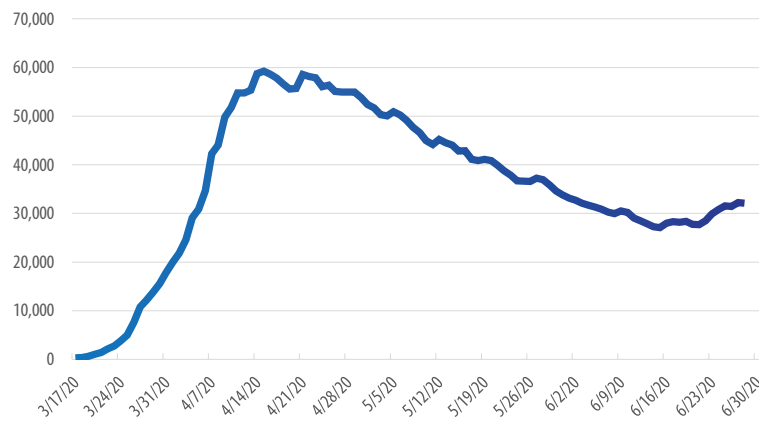
from COVID-19 in the U.S. on Sunday, June 28th, 2020.

That is **down 84%**

from the Sunday peak of 1,733 on April 19th, 2020.<sup>2</sup>

## Current Hospitalizations in the U.S.

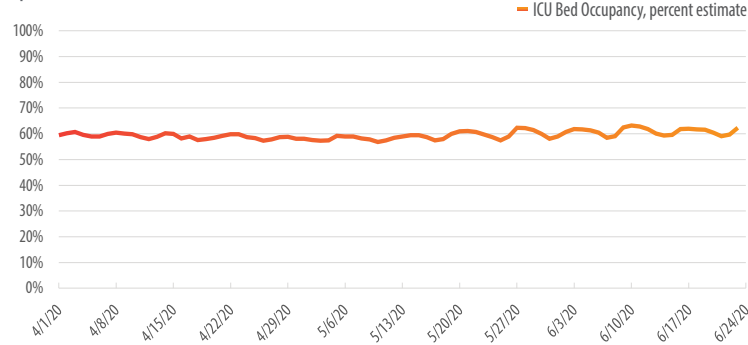
March 17, 2020 - June 29, 2020



Source: Covidtracking.com

## ICU Bed Occupancy in the U.S.

April 1, 2020 - June 23, 2020



Source: CDC.gov, National Healthcare Safety Network

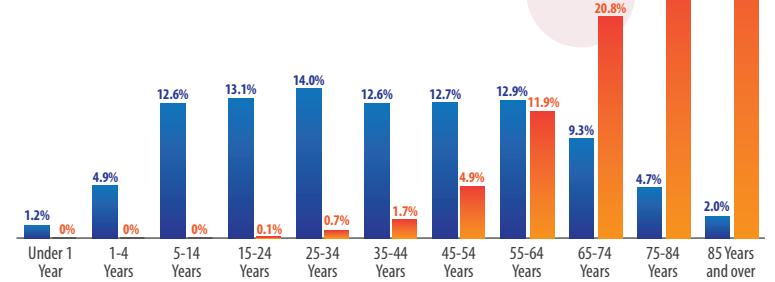
**45%**

of COVID-19 deaths have come from nursing homes and assisted living facilities, **which make up only 0.6% of the U.S. population.**<sup>1</sup>

## Deaths by Age vs. Share of Population in the U.S.

As of June 24, 2020

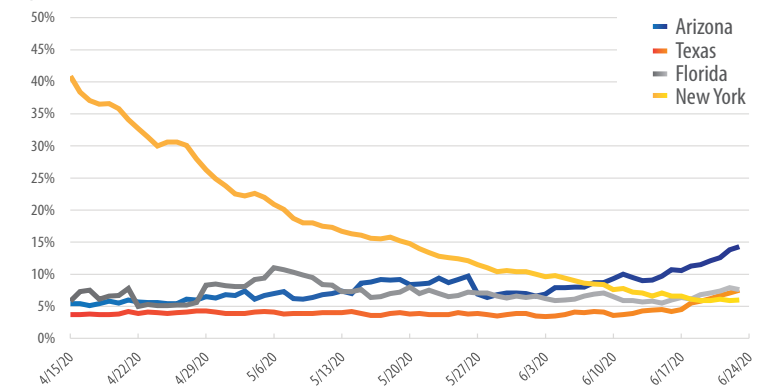
■ Percent of Population  
■ Percent of Total COVID-19 Deaths



Source: CDC.gov, National Center for Health Statistics

## Estimated Share of Inpatient Beds Occupied by Confirmed or Suspected COVID-19 Patients

April 15, 2020 - June 23, 2020

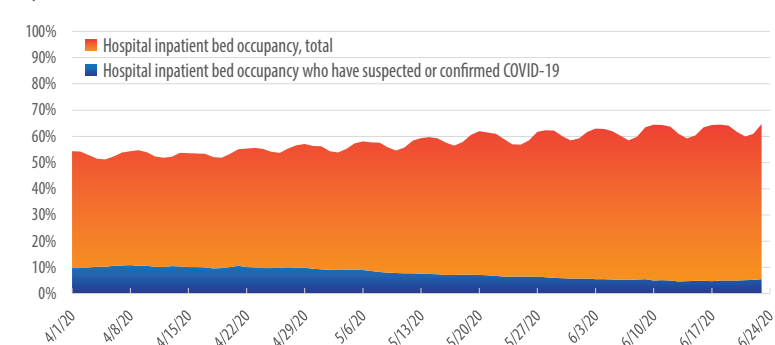


Source: CDC.gov, National Healthcare Safety Network

As of June 30, 2020, **35 states** continue to **reopen**, **11 states** have **paused reopening**, while **4 states** have begun **reversing reopening**.<sup>3</sup>

## Percent of Total Hospital Capacity in the U.S.

April 1, 2020 - June 23, 2020



Source: CDC.gov, National Healthcare Safety Network

<sup>1</sup>The Foundation for Research on Equal Opportunity (as of June 27, 2020); <sup>2</sup>Covidtracking.com; <sup>3</sup>The New York Times